



GAT MONTHLY MEMBERSHIP PROGRESS REPORT

Results as of: 5/31/2026

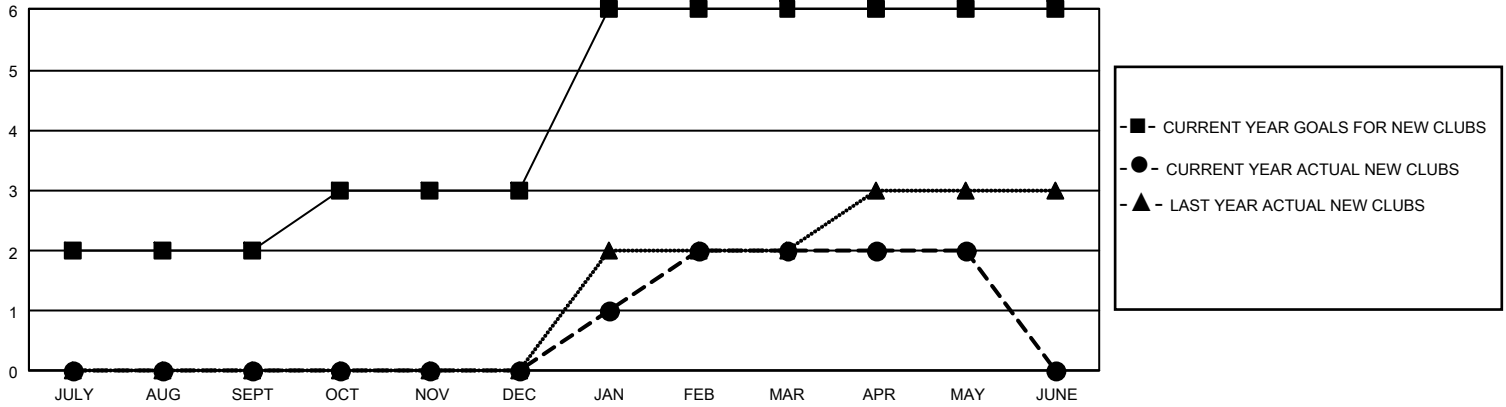
GMT Constitutional Area 4, Group J

REPORT DOES NOT INCLUDE CLUBS IN UNDISTRICTED AREAS.

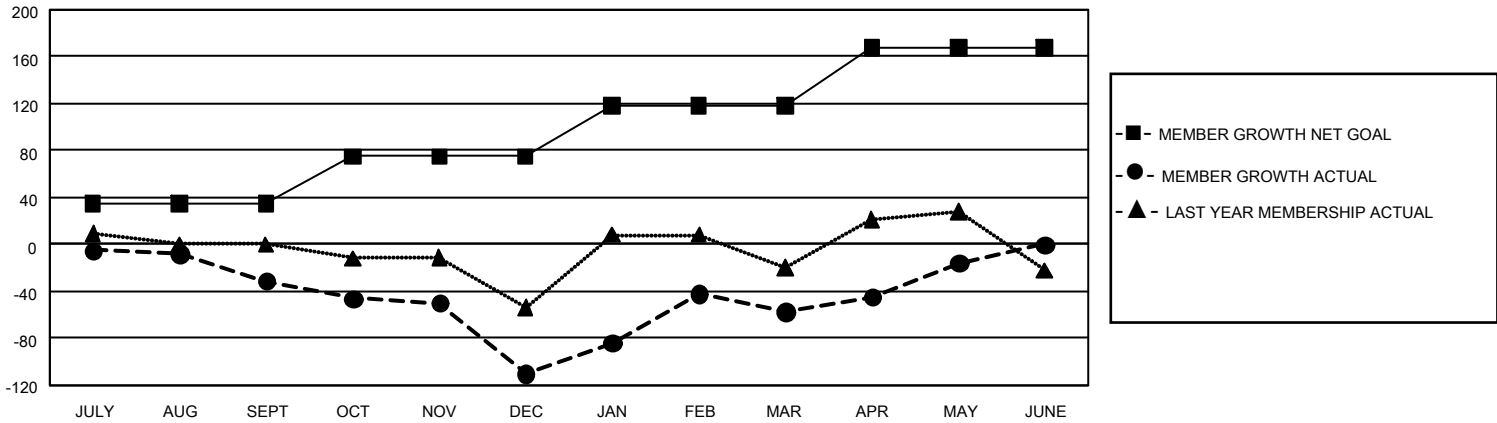
| Clubs | | | |
|-----------------------|---------------|-----------|---------------|
| RESULTS FOR 2025-2026 | | | |
| QUARTER | NEW CLUB GOAL | NEW CLUBS | DROPPED CLUBS |
| JULY/AUG/SEPT | 6 | 0 | 0 |
| OCT/NOV/DEC | 3 | 0 | 1 |
| JAN/FEB/MAR | 9 | 2 | 3 |
| APR/MAY/JUNE | 0 | 0 | 1 |

| Members | | | |
|-----------------------|------------------------|----------------------|--|
| RESULTS FOR 2025-2026 | | | |
| QUARTER | MEMBER GROWTH NET GOAL | MEMBER GROWTH ACTUAL | DROPPED MEMBERS ACTUAL (including transfers) |
| JULY/AUG/SEPT | 35 | 108 | 78 |
| OCT/NOV/DEC | 40 | 69 | 141 |
| JAN/FEB/MAR | 43 | 154 | 92 |
| APR/MAY/JUNE | 50 | 82 | 39 |

GOALS AND ACTUAL NEW CLUBS CUMULATIVE



GOALS AND ACTUAL MEMBERS CUMULATIVE



| | |
|-------------------------|------------|
| DROPPED CLUBS: 5 | |
| DROPPED MEMBERS | |
| DECEASED | 28 |
| CLUB CANCELLED | 30 |
| OTHER | 292 |
| TOTAL | 350 |

76 CLUBS OF 143 ADDED 1 OR MORE NEW MEMBERS

[CLICK HERE FOR CUMULATIVE MEMBERSHIP DATA](#)

| <u>GENDER DISTRIBUTION</u> | |
|---------------------------------|----------------|
| MALE | 2,022 (52.29%) |
| FEMALE | 1,853 (47.92%) |
| NON BINARY | 0 (0.00%) |
| PREFER NOT TO ANSWER | -8 (-0.21%) |
| TOTAL FAMILY UNIT MEMBERS | 952 |
| FAMILY MEMBERS PAYING HALF DUES | 501 |